

Brush Nickel (Finish ID : 3)

## HUDSON BAR PULL HANDLE

	Item Code	Size (mm & Inches)	Material	Size (Inches)				Fig.
				A	B	C	D	
1	BP.880.3".XX	76.2mm (3")	Brass	3.87	0.91	3	1.18	1
2	BP.880.128.XX	128mm (5.04")	Brass	5.91	0.91	5.04	1.18	1
3	BP.880.160.XX	160mm (6.3")	Brass	7.17	0.91	6.3	1.18	1
4	BP.880.192.XX	192mm (7.56")	Brass	8.43	0.91	7.56	1.18	1
5	BP.880.10".XX	254mm (10")	Brass	10.87	0.91	10	1.18	1
6	BP.880.12".XX	304.8mm (12")	Brass	12.87	0.91	12	1.18	1
7	BP.880.16".XX	406.4mm (16")	Brass	16.87	0.91	16	1.18	1

"XX" in item code denotes Finish ID.

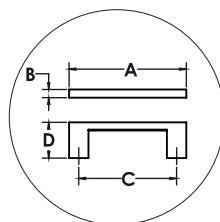
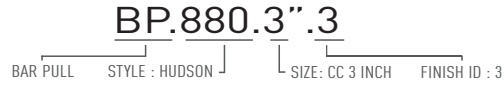


FIG. 1

This product is Supplied with M4x25mm screws.  
This product is Supplied with M4x45mm break off screws.

## How to Order



### Hudson Bar Pull Handle Finish Options

Base Material : Brass	Standard Finishes (2-3 Weeks Delivery)						
							
	Bright Chrome (Finish ID:2)	Brush Nickel (Finish ID:3)	Aged Brass (Finish ID:4)	Unlacquered Polished Brass (Finish ID:7U)	Polished Nickel (Finish ID:8)	Satin Brass (Finish ID:13)	
Base Material : Brass	Custom Finishes (3-4 Weeks Delivery)*						
							
	Lacquered Polished Brass (Finish ID:7L)	Matte Black (Finish ID:19)	Satin Chrome (Finish ID:24)	Graphite (Finish ID:61)	Titanium (Finish ID:79)	Ombre (Finish ID:92)	Brush Chrome (Finish ID:95)

- Custom finishes cannot be returned or refunded. We are unable to accept cancellations for custom finish order unless within 48 hours of the order being placed.
- We have uniform pricing for all non-hammered finishes listed above as long as base material and size is same.
- Contact us for customized finishes, refer pages F1, F2, F3 & F4 for finish glossary.
- Backplate options refer page DBP1-1 to DBP2-1.