



Graphite (Finish ID:61)

## FAIRMONT APPLIANCE PULL

	Item Code	Size (mm & Inches)	Material	Size (Inches)				Fig.
				A	B	C	D	
1	APL.900.12".XX	304.8mm (12")	Brass	17.13	0.63	12	1.57	1
2	APL.900.18".XX	457.2mm (18")	Brass	23.11	0.63	18	1.57	1

"XX" in item code denotes Finish ID.

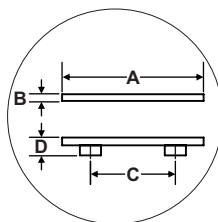


FIG. 1

This product is Supplied with M6x40mm screws.  
This product is Supplied with M6x60mm break off screws.

## How to Order

**APL.900.12".61**  
 APPLIANCE PULL    STYLE : FAIRMONT    SIZE : CC 12 INCH    FINISH ID : 61

### Fairmont Appliance Pull Finish Options

Base Material : Brass		Standard Finishes (2-3 Weeks Delivery)		
				
Bright Chrome (Finish ID:2)	Brush Nickel (Finish ID:3)	Unlacquered Polished Brass (Finish ID:7U)	Polished Nickel (Finish ID:8)	Satin Brass (Finish ID:13)
Base Material : Brass		Custom Finishes (3-4 Weeks Delivery)*		
				
Lacquered Polished Brass (Finish ID:7L)	Matte Black (Finish ID:19)	Graphite (Finish ID:61)	Ombre (Finish ID:92)	

- Custom finishes cannot be returned or refunded. We are unable to accept cancellations for custom finish order unless within 48 hours of the order being placed.
- We have uniform pricing for all non-hammered finishes listed above as long as base material and size is same.
- Contact us for customized finishes, refer pages F1, F2, F3 & F4 for finish glossary.
- Backplate options refer page ABP1-1 to ABP3-1.